

TECMA

786-327-4254

sales@tecmausa.com

THERMAL TRANSFER RIBBONS

Product	Description	When To Use	Recommended Stock
NET Flex+ (Premium Near-Edge Wax/Resin)	<ul style="list-style-type: none"> Excellent print quality up to 40 IPS Specifically designed for flexible packaging 	Mid-range durability requirements	<ul style="list-style-type: none"> Coated and uncoated paper tag and label stocks Polypropylene Polyethylene
NET Mark IQ (Premium Near-Edge Wax/Resin)	<ul style="list-style-type: none"> Crisp, black images Excellent at high speeds Used for tag and label or flexible packaging 	Fast print speed requirements up to 40 IPS	<ul style="list-style-type: none"> OPP PET Polyethylene
NET Color (Premium Near-Edge Wax/Resin)	<ul style="list-style-type: none"> Process and spot colors Specifically designed for flexible packaging 	Designed for use in both tag and label and flexible packaging applications	<ul style="list-style-type: none"> Coated paper tag and label stocks Polyethylene Polypropylene
SP330 (Super Premium Resin)	<ul style="list-style-type: none"> Excellent for most applications High abrasion resistance UL/CSA-recognized on many substrates 	Harsh - extreme environment labeling	<ul style="list-style-type: none"> Topcoated and print-treated polyesters Polyimide Polypropylene Polyethylene Vinyl Nylon
SP575 (Super Premium Resin)	<ul style="list-style-type: none"> Excellent harsh chemical resistance Highest abrasion resistance Performs best on PET 	Excellent resistance to abrasion, heat, steam, and chemicals	<ul style="list-style-type: none"> Topcoated and print-treated polyesters Polyimide Polypropylene
DC400 (Super Premium Color Resin)	<ul style="list-style-type: none"> Spot colors Maximum durability 	Printed image and label must last life of product	<ul style="list-style-type: none"> Polyethylene Polypropylene Polyester
Prime Mark (Premium Wax/Resin)	<ul style="list-style-type: none"> Excellent on glossy papers and synthetics UL/CSA recognized on select substrates 	Mid-range durability requirements	<ul style="list-style-type: none"> Coated paper Polyethylene Polypropylene Polyester
PM250 (Premium Wax/Resin)	<ul style="list-style-type: none"> Broad print range across darkness settings Withstands rough handling & abrasion 	Mild - moderate chemical resistance	<ul style="list-style-type: none"> PP / Polypropylene Vellum Gloss
DC200 (Premium Color Wax/Resin)	<ul style="list-style-type: none"> Process and spot colors High durability 	Barcodes requiring multiple scans throughout label life	<ul style="list-style-type: none"> Coated paper tag and label stocks Polyethylene Polypropylene
GP725 (Resin Enhanced Wax)	<ul style="list-style-type: none"> Drop-in replacement Excellent at high speeds (12 IPS) 	Light durability requirements	<ul style="list-style-type: none"> Coated and uncoated paper tag and label stocks Synthetic papers (i.e. Kimdura, Polyart)
High Mark (Resin Enhanced Wax)	<ul style="list-style-type: none"> High durability Low print energy 	General purpose labeling	<ul style="list-style-type: none"> Coated and uncoated paper tag and label stocks Synthetic papers (i.e. Kimdura, Polyart)
DC100 (General Purpose Color Wax)	<ul style="list-style-type: none"> Process and spot colors General purpose 	Short life labels with more complex formats	<ul style="list-style-type: none"> Coated and uncoated paper tag and label stocks Polyethylene films
SW200 (Standard Wax)	<ul style="list-style-type: none"> Economical and reliable Ideal for paper stocks 	Lower durability requirements Basic labeling applications	<ul style="list-style-type: none"> Uncoated paper & label stocks Coated paper & label stocks

STANDARD WAX



Shipping



Shelf/Bin



Warehousing



WIP Tracking



Logistics



Retail

SW200 Standard Wax

ECONOMICAL CHOICE FOR STANDARD APPLICATIONS

Benefits

- Handles basic applications with ease
- Reliable, economical wax ink
- Good stock latitude from rough to smooth papers
- Features Clean Start® patented printhead cleaner

Recommended Stocks

- Uncoated paper and label stocks
- Coated paper and label stocks

Technical Specifications

Maximum Print Speed 10 IPS
 Film Thickness 4.5 Microns
 Total Ribbon Thickness 8.1 Microns
 Transmission Density <4.0 MacBeth
 Scale
 Ink Melting Point 67° C/152° F

Sample SW200 Ribbons

Part# CES11033 - 110 mm x 50 m - CSI
 Part# CES11032 - 110 mm x 50 m - CSO



Offering a Range of Wax Ribbons to Meet Customer Demands.

General purpose labeling customers demand options tailored to their application needs. When looking to recommend a solution, here are some key differentiators.

Standard Wax - SW200

Best for basic labels with normal barcodes, larger text, and a price sensitive buyer

Resin Enhanced Wax - GP725 & High Mark

Best for higher end labels with complex formats, high speed printing and higher durability requirements.



RESIN ENHANCED WAX



Retail



Shipping



Compliance



Hang Tags



Shelf/Bin



Warehousing



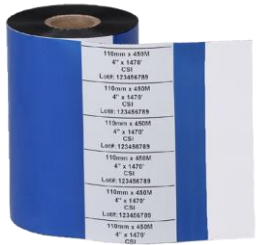
WIP Tracking

GP725 Resin Enhanced Wax

CAPABLE AND COMPATIBLE

Benefits

- Dark images with solid fill and no show-through
- Easy to use, no printer adjustments needed
- Unbeatable performance at high print speeds
- Prints on a wide range of tag and label stocks
- Anti-static - Ideal for RFID
- Guardian2 backcoat extends printhead life
- Features Clean Start® patented printhead cleaner



Recommended Stocks

- Coated and uncoated paper tag and label stock
- Synthetic papers (i.e. Kimdura, Polyart)

Technical Specifications

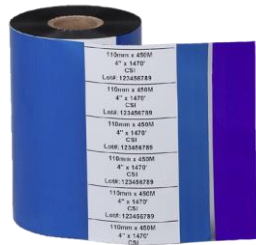
Maximum Print Speed	12 IPS
Film Thickness.....	4.5 Microns
Total Ribbon Thickness.....	8.6 Microns
Transmission Density	2.7 MacBeth Scale
Ink Melting Point	65° C/149° F
Sample GP725 Ribbons	
Part # CES11075 - 110 mm x 50 m - CSI	
Part # CES11074 - 110 mm x 50 m - CSO	

High Mark Resin Enhanced Wax

ADDED DURABILITY

Benefits

- Prints at lower energy settings
- Offers higher durability than most waxes
- Outstanding print performance on coated stocks
- Specially formulated backcoat protects the printhead
- Features Clean Start® patented printhead cleaner



Recommended Stocks

- Coated and uncoated paper tag and label stock
- Synthetic papers (i.e. Kimdura, Polyart)

Technical Specifications

Maximum Print Speed	10 IPS
Film Thickness.....	4.5 Microns
Total Ribbon Thickness.....	7.5 Microns
Transmission Density	1.45 MacBeth Scale
Ink Melting Point	62° C/144° F
Sample High Mark Ribbons	
Part # CES11011 - 110 mm x 50 m - CSI	
Part # CES11012 - 110 mm x 50 m - CSO	
UL Labeling Reference	
FLEXcon: MH16635	
3M: MH16411	

DC100 General Purpose Wax



General Purpose Wax

Process:



Spot:



Recommended Stocks

- Uncoated paper tag and label stocks
- Coated paper tag and label stocks
- Polyethylene films

Technical Specifications

Maximum Print Speed	8 IPS
Film Thickness.....	4.5 Microns
Total Ribbon Thickness.....	8.0 Microns
Ink Melting Point	68° C/154° F
Additional Specialty Colors Available.	

*Scannable color: may pass for visible light scanners

Swatches are approximate representations of actual colors. No guarantee can be made for exact color match.

WAX/RESIN



Industrial



Outdoor



Horticulture



Lumber



Chemical Drum



Shipping



Pharmaceutical



Shelf/Bin



Pallet

PM250 Premium Wax/Resin

OUTSTANDING VERSATILITY AND PRINT QUALITY

Benefits

- Prints on a broad range of substrates from rough to smooth surfaces
- Bold, glossy print quality with crisp line formation
- Broad print range across darkness settings - no energy adjustments
- Withstands rough handling, abrasion, and outdoor elements
- Efficient at high print speeds
- Maintain printhead cleaning with Clean Start® built-in printhead cleaner

Recommended Stocks

- Matte, semi-gloss, high gloss paper
- Polypropylene
- Polyethylene

Technical Specifications

Maximum Print Speed.....12IPS
 Film Thickness.....4.5M icrons
 Total Ribbon Thickness.....7.6 Microns
 Transmission Density.....1.5 MacBeth Scale
 Ink Melting Point.....80°C/176°F

Sample PM308 Ribbons

Part # CES11035 - 110 mm x 50 m - CSI
 Part # CES11034 - 110 mm x 50 m - CSO



Prime Mark Premium Wax/Resin

EXCELLENT DURABILITY FOR MID-RANGE APPLICATIONS

Benefits

- Excellent scratch and smudge resistance
- Withstands multiple scans, outdoor elements, rough handling
- Dark black images
- Notable performance on glossy papers, BOPP, PE
- Specially formulated backcoat protects the printhead
- Features Clean Start® patented printhead cleaner

Recommended Stocks

- Coated paper
- Polyethylene
- Polypropylene
- Polyester

Technical Specifications

Maximum Print Speed8 IPS
 Film Thickness.....4.5 Microns
 Total Ribbon Thickness.....6.8 Microns
 Transmission Density1.10
 MacBeth Scale
 Ink Melting Point80°C/176°F

Sample Prime Mark Ribbons

Part # CES11023 - 110 mm x 50 m - CSI
 Part # CES11022 - 110 mm x 50 m - CSO

UL and CSA Labeling Reference:
 Avery Fassion: UL MH17205, CSA 97198
 FLEXcon: UL ML16635, CSA 99214
 3M: UL MH16411



DC200 Premium Color Wax/Resin

PREMIUM WAX/RESIN

Process:



Spot:



Recommended Stocks

- Coated paper tag and label stocks
- Polyethylene films
- Polypropylene films

Technical Specifications

Maximum Print Speed8 IPS
 Film Thickness.....4.5 Microns
 Total Ribbon Thickness.....7.4 Microns
 Ink Melting Point80°C/176°F

*Scannable color: may pass for visible light scanners

Swatches are approximate representations of actual colors.

No guarantee can be made for exact color match.



RESIN



Industrial



Outdoor



Automotive



Electronics



Medical Devices



Pharmaceutical



Life Sciences



Garment

SP330 General Purpose Resin



THE ULTIMATE IN DURABILITY

Benefits

- Maximum durability for harsh environment labeling
- Excellent mechanical durability
- Good resistance to typical chemicals
- Very dark black images with exceptional sharpness
- Prints on a wide range of synthetic receivers
- Anti-static formula and backcoat extend printhead life
- Features Clean Start® patented printhead cleaner

Recommended Stocks

- Topcoated and print-treated polyester
- Polyimide films
- Polypropylene
- Polyethylene
- Vinyl
- Nylon

Technical Specifications

Maximum Print Speed6 IPS
 Film Thickness4.5 Microns
 Total Ribbon Thickness6.2 Microns
 Transmission Density1.00

MacBeth
Scale

Ink Melting Point110°C/230°F

Sample SP330 Ribbons

Part # CES11019 - 110 mm x 50 m - CSI
 Part # CES11018 - 110 mm x 50 m - CSO

UL and CSA Labeling Reference:

Avery Fasson: UL MH17205, CSA 97198
 FLEXcon: UL MH16635, CSA 99214
 3M: UL MH16411

SP575 Super Premium Resin



MAXIMUM DURABILITY

Benefits

- Exceptional mechanical durability
- Excellent resistance to harsh chemicals
- Very dark images with exceptional sharpness
- Prints on a wide range of synthetic receivers
- Exceptional fine line quality
- Anti-static formula and backcoat extend printhead life
- Features Clean Start® patented printhead cleaner

Recommended Stocks

- Top-Coated and Print-Treated Polyester
- Polyimide Films
- Polypropylene
- Polyethylene

Technical Specifications

Maximum Print Speed6 IPS
 Film Thickness4.5 Microns
 Total Ribbon Thickness5.7 Microns
 Transmission Density1.60

MacBeth
Scale

Ink Melting Point110°C/230°F

Sample SP575 Ribbons

Part # CES11013 - 110 mm x 50 m - CSI
 Part # CES11014 - 110 mm x 50 m - CSO

UL and CSA Labeling Reference:

Avery Fasson: UL MH17205, CSA 97198
 FLEXcon: UL MH16635, CSA 99214
 3M: UL MH16411

DC400 Super Premium Resin Color



SUPER PREMIUM RESIN



Recommended Stocks

- Polyethylene films
- Polypropylene films
- Polyester films

Technical Specifications

Maximum Print Speed6 IPS
 Film Thickness4.5 Microns
 Total Ribbon Thickness8.0 Microns
 Ink Melting Point110°C/230°F

Additional Specialty Colors Available.

Swatches are approximate representations of actual colors.

No guarantee can be made for exact color match.

NEAR-EDGE WAX/RESIN



Snack



Dairy



Coffee



Frozen



Produce



Medical



Pharmaceutical



Health/Beauty



Retail



Shipping



Compliance

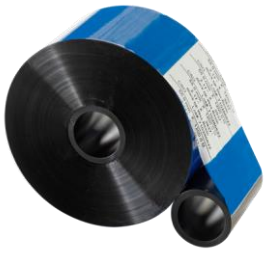


Shelf/Bin



Hang Tags

NET Flex+ Premium Near-Edge Wax/Resin



HIGH SPEED PRINTING

Benefits

- Excellent print quality at all speeds up to 40 IPS
- Highly compatible at various darkness/energy settings
- Produces dark, black imprints
- Wax/resin formula offers good durability with resistance to abrasion encountered on form, fill and seal equipment
- Performs well in ambient and cold printing environments
- Also available in longer lengths - 1100m & 1200m

Recommended Stocks

- OPP / Polypropylene
- PET / Polyester
- PE / Polyethylene

Technical Specifications

Maximum Print Speed.....	40IPS
Film Thickness.....	4.5 Microns
Total Ribbon Thickness.....	6.2 Microns
Transmission Density	1.50
	MacBeth Scale
Ink Melting Point	57° C/134° F



NET Mark IQ Premium Near-Edge Wax/Resin



FAST PROCESSING

Benefits

- Produces exceptionally black bar codes and images with no show-through
- Broad stock latitude, prints well on both rough, uncoated stocks and smooth, coated stocks
- Mid-range scratch and smear resistance
- Print speeds up to 24 IPS in flexible packaging

Recommended Stocks

- Coated and uncoated
- Polyolefin (i.e. Tyvek)
- Polypropylene
- Polyethylene
- Paper tag and label stocks

Technical Specifications

Maximum Print Speed	24 IPS
Film Thickness.....	4.5 Microns
Total Ribbon Thickness.....	7.6 Microns
Transmission Density	1.10
	MacBeth Scale
Ink Melting Point	70° C/158° F

NET Color Premium Near-Edge Wax/Resin



NEAR EDGE WAX/RESIN

Process:



Spot:



Recommended Stocks

- Coated paper atg and label stocks
- Polypropylene films
- Polyethylene films

Technical Specifications

Maximum Print Speed	12 IPS
Film Thickness.....	4.5 Microns
Total Ribbon Thickness.....	7.5 Microns
Ink Melting Point	70° C/158° F

Swatches are approximate representations of actual colors. No guarantee can be made for exact color match.